

All goods and personal effects entering St Helena are inspected on arrival using a combination of detector dogs, x-ray machines and visual checks.

**Any prohibited or restricted goods found will be seized.**

If you have inadvertently brought in such goods please hand them over to a Customs or Biosecurity Officer, or place them in the quarantine bin in the arrivals hall.

**If in doubt declare it**



This leaflet gives examples of the commoner restricted goods.

For further information about bringing or sending items to St Helena or if you have any questions please contact the Biosecurity Officer

Julie Balchin at:

ANRD on 24724

[julie.balchin@enrd.gov.sh](mailto:julie.balchin@enrd.gov.sh)

**Thank you for helping to protect St Helena**

**We trust you enjoy your stay and come back to enjoy our beautiful island**



**St Helena Government**  
Agriculture and Natural Resources Division  
**BIOSECURITY**



**Biosecurity advice  
for people travelling  
to St Helena**





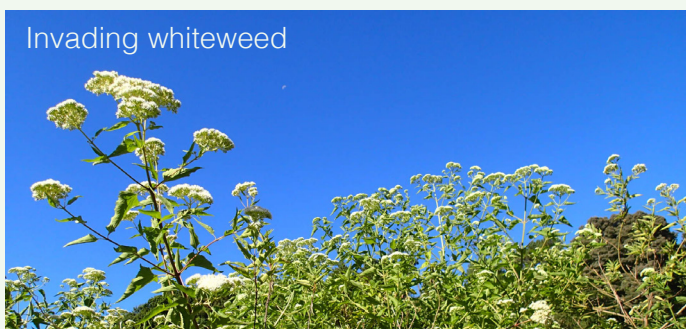
# Welcome to St Helena!

There are strict controls on what you can bring in.

## Why do these controls exist?

As a remote oceanic island, St Helena is very vulnerable to the harmful impacts of introduced pests, weeds and diseases.

Everyone benefits from a strong biosecurity system so everyone has a role to play. In order to protect the Island please note the following restrictions on the personal effects you can bring in.



## Permitted:

- **Processed food** such as chocolate and cake.
- Food items such as **nuts, herbs, spices, dried fruit etc**, if in unopened packets from a commercial source.
- Most types of **plant seed** if in unopened packets from a commercial source.

## Restricted:

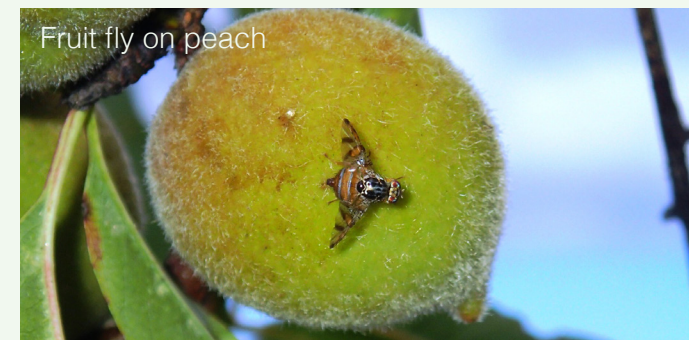
- **Fresh fruit and vegetables** only under licence
- **Live animals** only under licence
- Some **meat and fish** products

## Prohibited:

- **Honey** which can carry bee diseases
- **Cut flowers** which can carry pests and plant diseases

**If in doubt, declare it**

Thank you for helping to protect our beautiful island



**Dirty boots and shoes** can carry weed seeds and harmful plant diseases which could damage the islands agriculture or native plants and animals.

Please ensure that your footwear is clean before landing.

